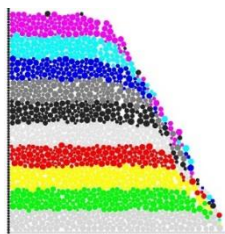
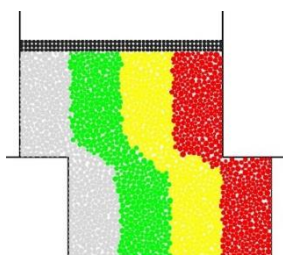


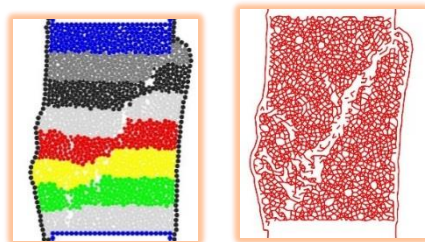
休止角试验



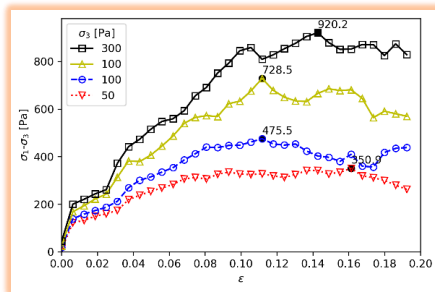
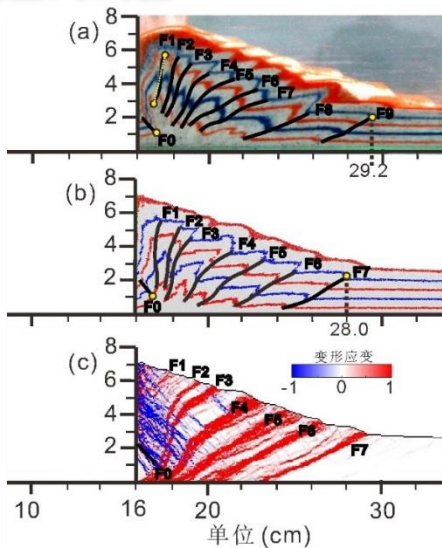
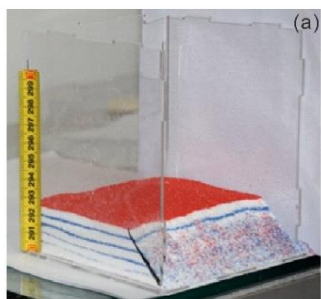
直剪试验



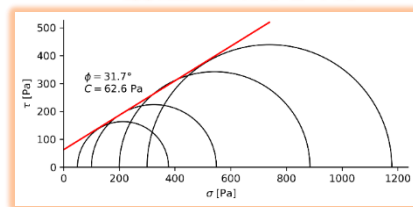
双轴试验



媲美室内试验



试样的应力应变曲线



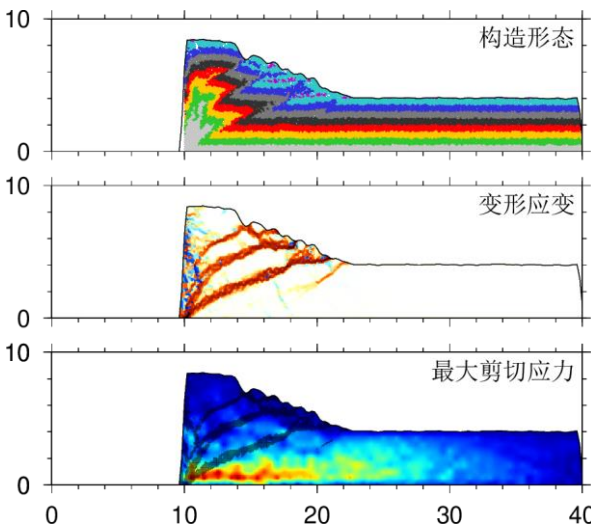
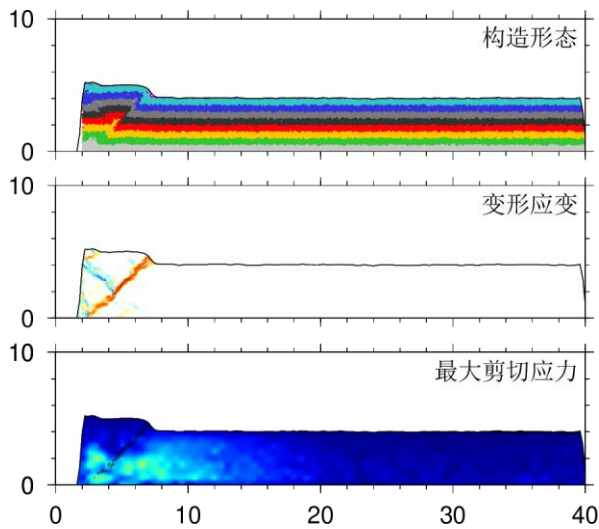
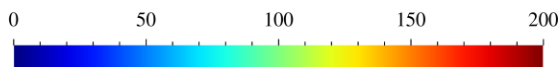
双轴试样的莫尔强度包络线

应力应变分析

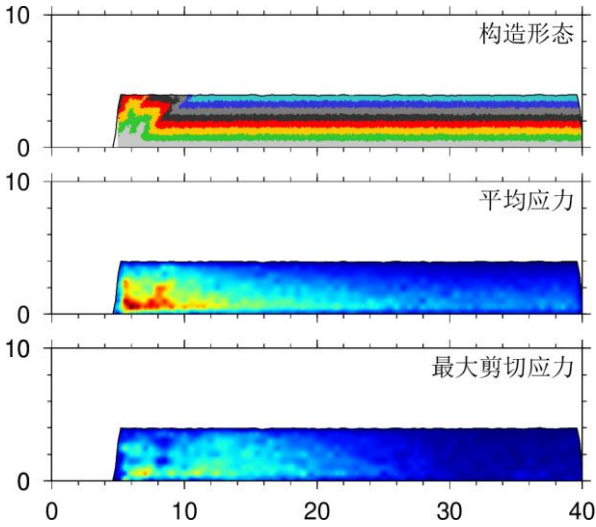
变形应变



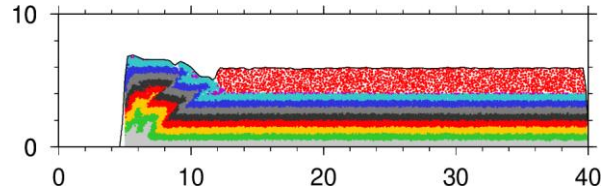
最大剪切应力 (MPa)



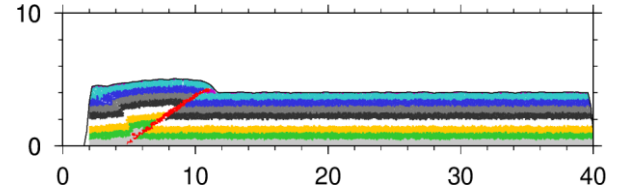
同构造剥蚀



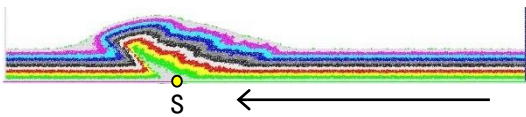
同构造沉积



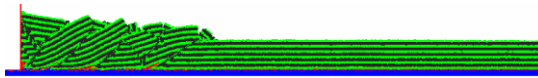
先存构造



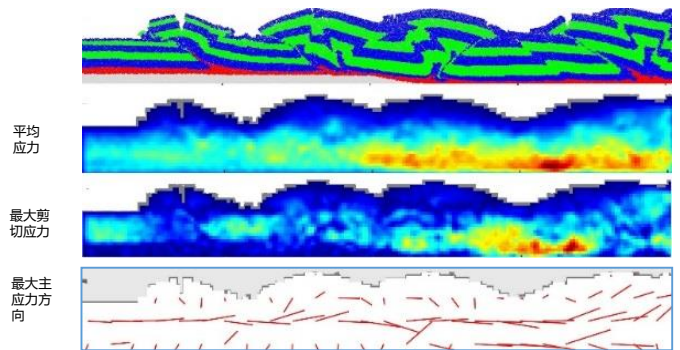
汇聚试验



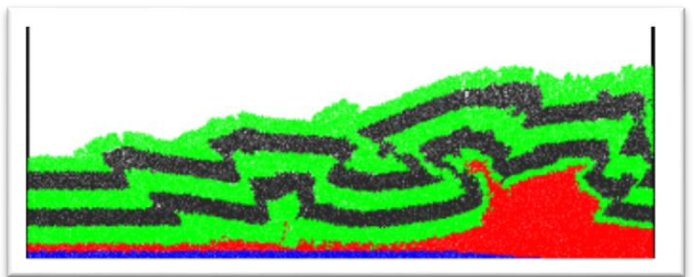
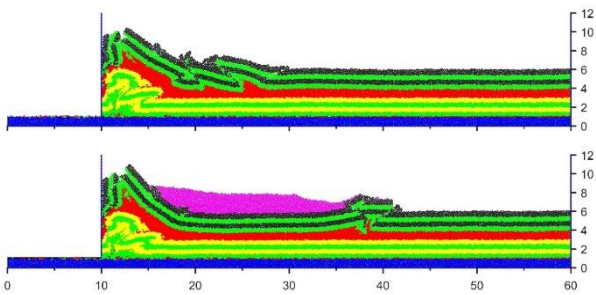
粘聚材料



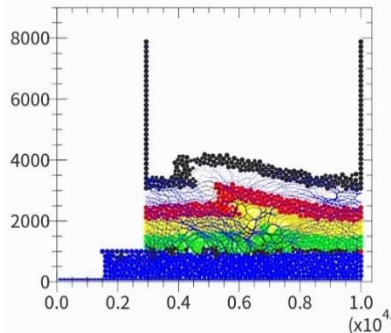
基底斜坡滑脱层复杂模型



盐构造



- 完善的软件手册
<https://doc.geovbox.com>
- 适合构造模拟的接触力学模型
Hardy et al, 2009; Morgan, 2015
- 一天内即可完成相关计算
- 丰富的构造模拟实例



QQ 交流群